

W2 OWNER'S MANUAL ERRATA

Rev. B-2, January 14, 2010

1. **Page 6, Add to Rear Panel Note 1:** Normally you must push the power ON/OFF button to start the W2 after 12VDC is applied. If you'd like the W2 to turn on automatically when power is applied, a simple mod is required to add a jumper inside the unit. This modification is described in Appendix C of this manual.
2. **Page 15, Fourth Step:** Change the second sentence to read, "Secure the cover with two 3/16" (4.0 mm) black flat head screws on the top and two 3/16" (4.0 mm) black pan head screws on the back."
3. **Appendix C:** Appendix C is on the reverse side of this errata sheet. After incorporating the above changes, add the appendix by inserting this sheet in the back of your manual.

Appendix C – Power On Modification

With this modification the W2 will turn on when 12VDC is applied without pressing the POWER button. The modification involves soldering a short wire jumper onto the main circuit board. Only the top cover need be removed to install the jumper.

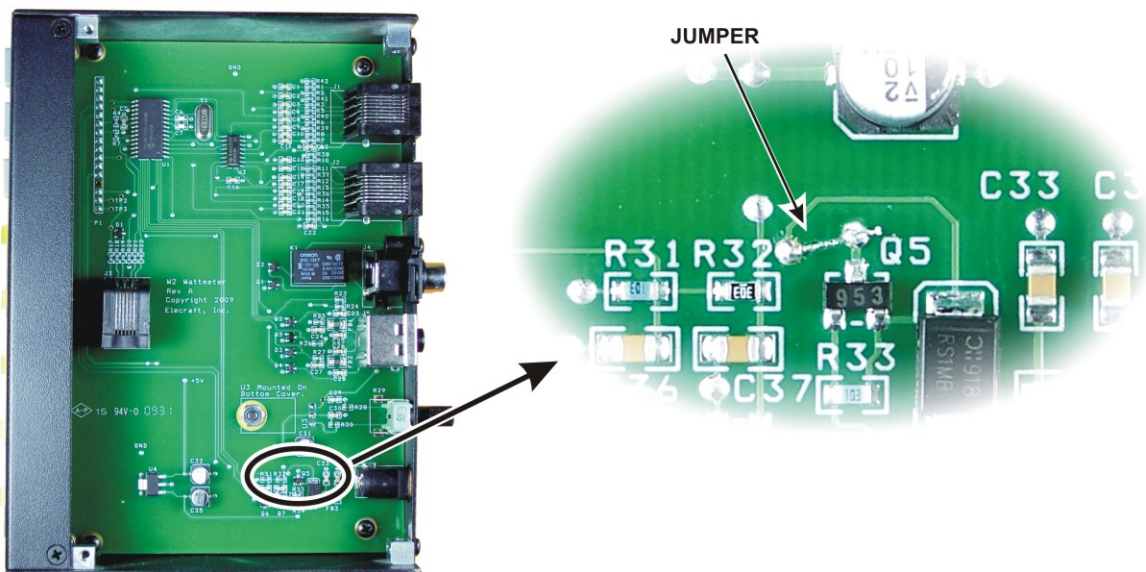
Important Operating Notes for Modified Units

1. Pressing the POWER button will turn the unit off, but not on. If you press the POWER button, you must remove and reapply 12VDC to turn the unit on.
2. To prepare the W2 to download new firmware, hold the SENSOR button while applying 12VDC power. When you release the SENSOR button, the green 1 LED should blink, indicating the W2 is ready to receive new firmware.

Installing the Jumper

⚠ Observe ESD precautions when working inside your W2. Wear an ESD wrist strap or touch an unpainted, metal ground frequently while working. Use an ESD-safe soldering iron.

- Remove the W2 top cover. It is held in place by two flat head screws on top and two pan head screws on the back.
- Install the jumper as shown below. It is not necessary to put the jumper through the pads. Recommend you solder the jumper across the top of the pads as shown. Be sure you don't create a solder bridge to the end of R32.



- Replace the top cover. Be sure you replace all four screws.